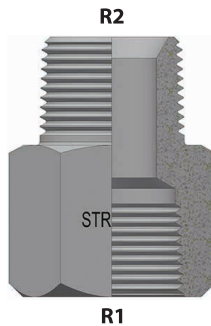






30.17.10 - ADAPTADOR HEMBRA NPT - MACHO NPT

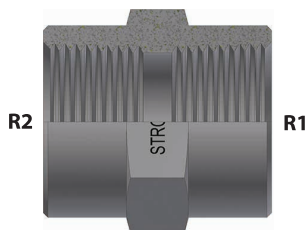
Ref. SAE 140139







	R1 		R2 		
	Código	H. NPT	M. NPT	Pzas/caja	
30.17.10.0402	1/4"	1/4" - 18	1/8"	1/8" - 27	50
30.17.10.0404	1/4"	1/4" - 18	1/4"	1/4" - 18	50
30.17.10.0602	3/8"	3/8" - 18	1/8"	1/8" - 27	20
30.17.10.0604	3/8"	3/8" - 18	1/4"	1/4" - 18	50
30.17.10.0606	3/8"	3/8" - 18	3/8"	3/8" - 18	50
30.17.10.0804	1/2"	1/2" - 14	1/4"	1/4" - 18	50
30.17.10.0806	1/2"	1/2" - 14	3/8"	3/8" - 18	50
30.17.10.0808	1/2"	1/2" - 14	1/2"	1/2" - 14	50
30.17.10.1208	3/4"	3/4" - 14	1/2"	1/2" - 14	50
30.17.10.1212	3/4"	3/4" - 14	3/4"	3/4" - 14	50
30.17.10.1608	1"	1" - 11 1/2	1/2"	1/2" - 14	20
30.17.10.1612	1"	1" - 11 1/2	3/4"	3/4" - 14	20
30.17.10.1616	1"	1" - 11 1/2	1"	1" - 11 1/2	20
30.17.10.2016	1 1/4"	1 1/4" - 11 1/2	1"	1" - 11 1/2	10

30.17.17 - UNIÓN HEMBRA NPT - HEMBRA NPT

Ref. SAE 140138



	R1 		R2 		
	Código	H. NPT	H. NPT	Pzas/caja	
30.17.17.0202	1/8"	1/8" - 27	1/8"	1/8" - 27	100
30.17.17.0402	1/4"	1/4" - 18	1/8"	1/8" - 27	50
30.17.17.0404	1/4"	1/4" - 18	1/4"	1/4" - 18	100
30.17.17.0604	3/8"	3/8" - 18	1/4"	1/4" - 18	50
30.17.17.0606	3/8"	3/8" - 18	3/8"	3/8" - 18	100
30.17.17.0804	1/2"	1/2" - 14	1/4"	1/4" - 18	50
30.17.17.0806	1/2"	1/2" - 14	3/8"	3/8" - 18	50
30.17.17.0808	1/2"	1/2" - 14	1/2"	1/2" - 14	100
30.17.17.1208	3/4"	3/4" - 14	1/2"	1/2" - 14	20
30.17.17.1212	3/4"	3/4" - 14	3/4"	3/4" - 14	50
30.17.17.1612	1"	1" - 11 1/2	3/4"	3/4" - 14	20
30.17.17.1616	1"	1" - 11 1/2	1"	1" - 11 1/2	50
30.17.17.2020	1 1/4"	1 1/4" - 11 1/2	1 1/4"	1 1/4" - 11 1/2	20
30.17.17.2424	1 1/2"	1 1/2" - 11 1/2	1 1/2"	1 1/2" - 11 1/2	10
30.17.17.3232	2"	2" - 11 1/2	2"	2" - 11 1/2	5