

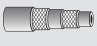

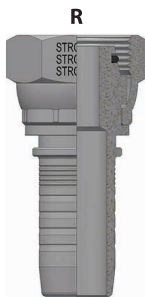




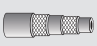

100.550 - ESPIGA MEGAFIT® MACHO MÉTRICO DIN 3861 SERIE HEAVY


	R 		C	L	
Código	M. Métrico Heavy	Espiga	Cut off	Long	Pzas/caja
100.550.1604	M16 x 1.5/Tubo 8	1/4"	23.5	49.0	20
100.550.1804	M18 x 1.5/Tubo 10	1/4"	23.5	49.0	20
100.550.2006	M20 x 1.5/Tubo 12	3/8"	25.0	52.0	20
100.550.2206	M22 x 1.5/Tubo 14	3/8"	27.0	54.0	20
100.550.2406	M24 x 1.5/Tubo 16	3/8"	27.0	54.0	20
100.550.2408	M24 x 1.5/Tubo 16	1/2"	27.5	57.5	20
100.550.3012	M30 x 2.0/Tubo 20	3/4"	32.5	68.5	20
100.550.3612	M36 x 2.0/Tubo 25	3/4"	36.5	72.5	20
100.550.3616	M36 x 2.0/Tubo 25	1"	37.0	84.0	10
100.550.4216	M42 x 2.0/Tubo 30	1"	40.0	87.0	10
100.550.5220	M52 x 2.0/Tubo 38	1 1/4"	46.0	99.0	5

100.560 - ESPIGA MEGAFIT® HEMBRA G. MÉTRICA DIN 3865 SERIE HEAVY

Incluye O-ring de Nitrilo



	R 		C	L	
Código	H. G. Métrica Heavy	Espiga	Cut off	Long	Pzas/caja
100.560.1404	M14 x 1.5/Tubo 6	1/4"	26.5	52.0	50
100.560.1604	M16 x 1.5/Tubo 8	1/4"	27.5	53.0	50
100.560.1804	M18 x 1.5/Tubo 10	1/4"	29.0	54.5	50
100.560.1806	M18 x 1.5/Tubo 10	3/8"	29.5	56.5	50
100.560.2005	M20 x 1.5/Tubo 12	5/16"	29.5	55.0	20
100.560.2006	M20 x 1.5/Tubo 12	3/8"	30.0	57.0	50
100.560.2206	M22 x 1.5/Tubo 14	3/8"	31.0	58.0	20
100.560.2208	M22 x 1.5/Tubo 14	1/2"	31.5	61.5	20
100.560.2408	M24 x 1.5/Tubo 16	1/2"	33.5	63.5	50
100.560.3010	M30 x 2.0/Tubo 20	5/8"	40.0	73.0	50
100.560.3012	M30 x 2.0/Tubo 20	3/4"	41.0	77.0	50
100.560.3612	M36 x 2.0/Tubo 25	3/4"	44.5	80.5	50
100.560.3616	M36 x 2.0/Tubo 25	1"	37.0	84.0	20
100.560.4216	M42 x 2.0/Tubo 30	1"	47.0	94.0	20
100.560.5220	M52 x 2.0/Tubo 38	1 1/4"	53.0	106.0	10
100.560.5224	M52 x 2.0/Tubo 38	1 1/2"	53.0	115.0	10